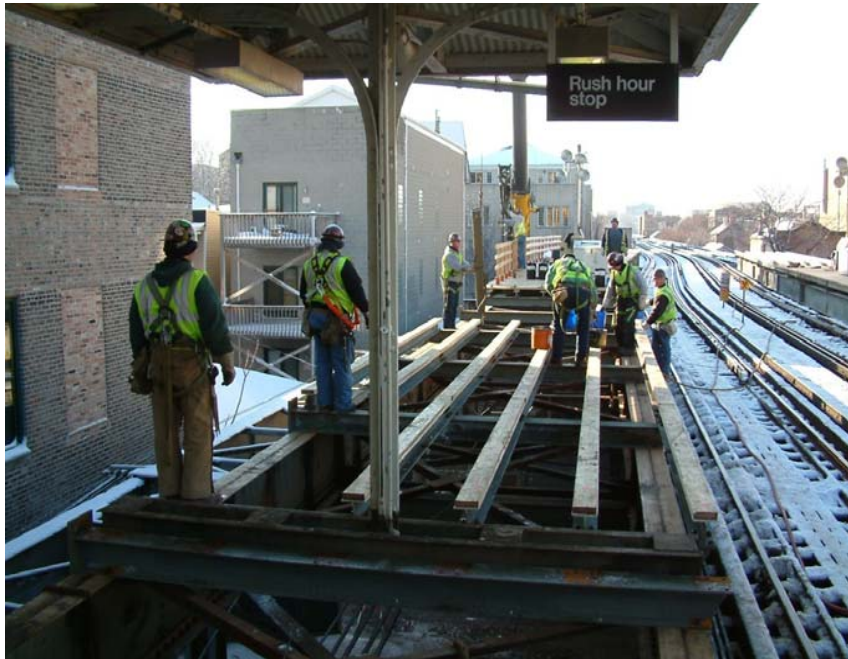




Brown Line Capacity Expansion Project



Southport, Diversey, Wellington and Paulina Stations
Meet the Contractor
March 1, 2007
Advocate Illinois Masonic Medical Center
Olson Auditorium



Brown Line Capacity Expansion Project Agenda



- Welcome and Introduction
- Brown Line Capacity Expansion
Project Objectives and Update
- FHP Tectonics
- Southport, Diversey, Wellington and Paulina Temporary Closures
- Schedule Overview
- Public Information
- Business Outreach
- Community Outreach
- Questions/Answers



Brown Line Capacity Expansion Project Objectives



- Increase the line's overall ridership capacity by 33% by extending platforms to allow 8-car operations
- Provide access to all CTA customers throughout all stations and comply with the accessibility requirements of the Americans with Disabilities Act
- Rehabilitate 18 stations
- Add elevators to 13 stations
- Restore 8 historic stations in agreement with the Illinois Historic Preservation Agency
- Upgrade signal, communications and power delivery system
- Project complete by December 31, 2009



Brown Line Capacity Expansion Project Progress Update



Awarded Bid Packages

- Signals and Clark Junction
(Notice to Proceed began December 13, 2004)
- Substations
(Notice to Proceed January 10, 2005)
- Belmont and Fullerton Stations
(Notice to Proceed issued August 17, 2005)
- Armitage, Sedgwick and Chicago
(Notice to Proceed issued November 15, 2005)
- Kimball, Kedzie, Francisco, Rockwell and Western
(Notice to Proceed issued November 15, 2005)
- Damen, Montrose, Irving Park and Addison
(Notice to Proceed issued September 13, 2006)
- Southport, Diversey, Wellington and Paulina
(Notice to Proceed issued December 26, 2006)

Planned Bid Packages

- Communications Package



Brown Line Capacity Expansion Project Progress Update



Station Work:

- Temporary station at Belmont was placed into service December of 2006
- Fullerton temporary stationhouse opened on October 8, 2006. New track four partial platform was placed into service January of 2007
- Kedzie and Rockwell reopened ahead of schedule on August 16, 2006 for service
- Kimball reopened ahead of schedule on January 12, 2007 for service
- Francisco is scheduled to re-open in March of 2007 for service
- Structural foundation work has started at Armitage Sedgwick, Chicago, Montrose and Addison



Brown Line Capacity Expansion Project Progress Update



Signal Work:

- Installation of all new crossovers has been completed in the Clark Junction area
- Signalization of new crossovers will continue through early 2007
- All grade crossings in the At-Grade portion of the line have been replaced with new crossing gates and electronics
- Rehabilitation of Kimball Tower is ongoing

Substations Work:

- Installation of new electrical equipment at Clark and Grace Street Substations continues
- Exterior work at Grace was completed in January of 2007
- Control wire installation at Clark Street Substation continues



Brown Line Capacity Expansion Project Southport, Diversey, Wellington and Paulina Stations



- Community Meeting: September 22, 2005
- Advertise for Bids: August 3, 2006
- Bid Opening: September 28, 2006
- Notice to Proceed: December 26, 2006

Awarded to FHP Tectonics

- Construction Completion: Fall 2009



Brown Line Capacity Expansion Project FHP Tectonics

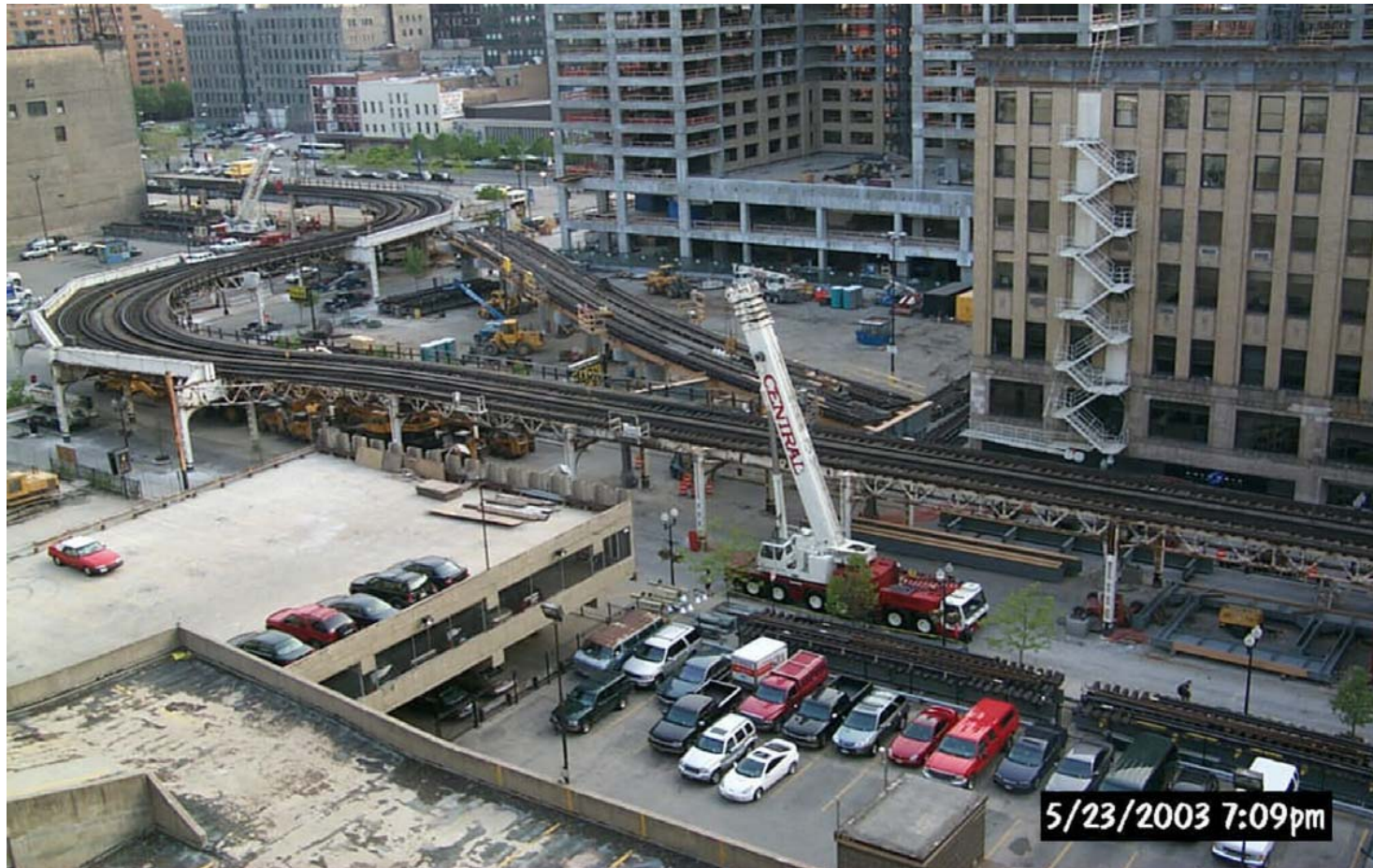


FHP Overview

- One of the largest general contractors in the Midwest serving the Chicagoland area for over 29 years
- Primarily focused on public works and transit projects
- Re-Opened 3 Brown Line Stations (Kedzie, Rockwell, Kimball) with Francisco Station opening soon.
- Currently working on 7 Brown Line Stations (Francisco, Western, Belmont, Fullerton, Armitage, Sedgwick and Chicago)



Brown Line Capacity Expansion Project FHP Tectonics Similar Project Experience



Harrison Curve Realignment Before



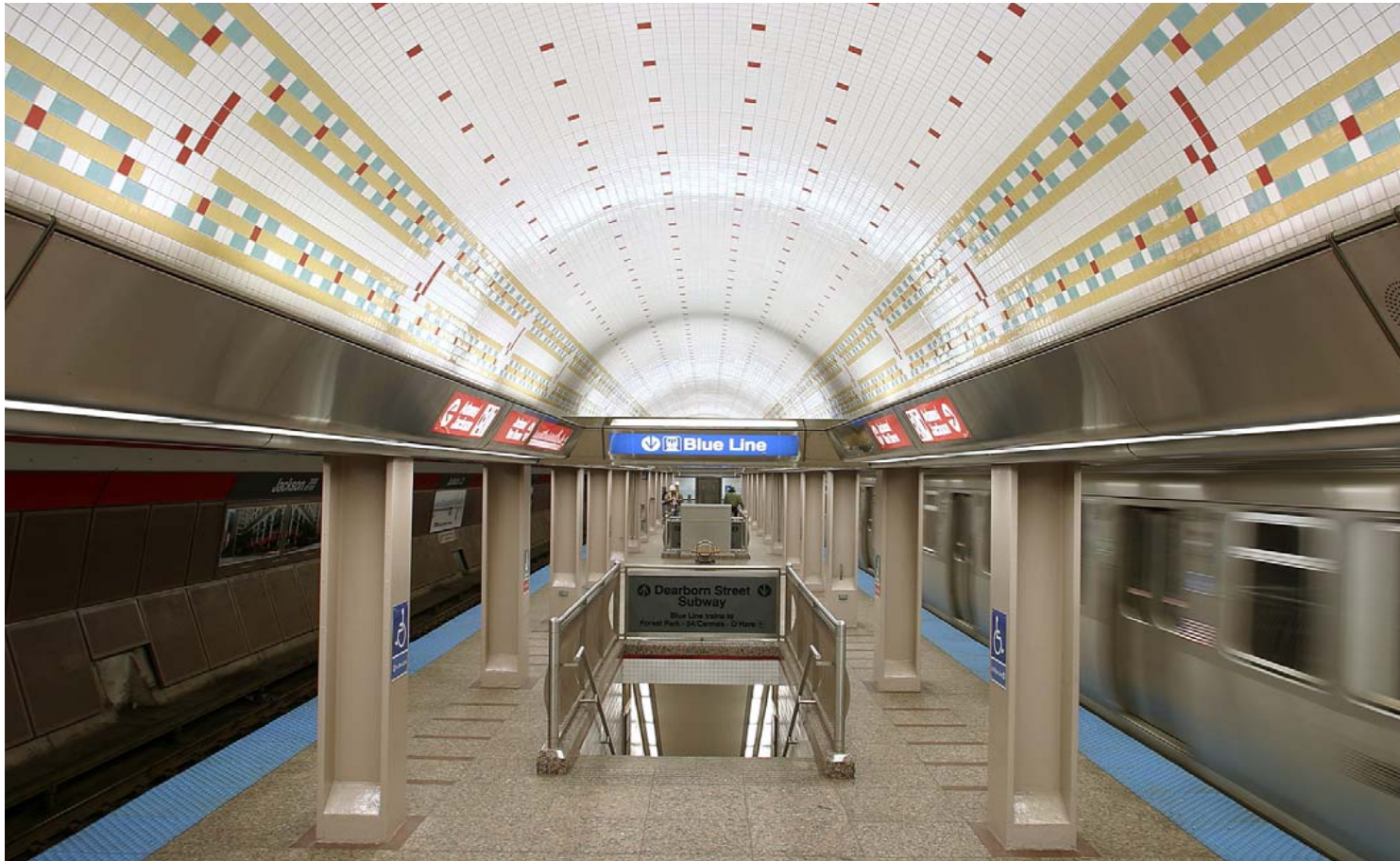
Brown Line Capacity Expansion Project FHP Tectonics Similar Project Experience



Harrison Curve Realignment After



Brown Line Capacity Expansion Project FHP Tectonics Similar Project Experience



Jackson/State Red Line Platform (2003)



Brown Line Capacity Expansion Project FHP Tectonics Similar Project Experience



Lake/Randolph Red Line Station (2005)



Brown Line Capacity Expansion Project FHP Tectonics Similar Project Experience



Rockwell Brown Line Station (2005)



Brown Line Capacity Expansion Project FHP Tectonic



Initial Construction Activities

- Noise and vibration monitoring set up
- Site survey/track survey
- Utility trenching
- Existing condition photo/video survey



Brown Line Capacity Expansion Project FHP Tectonic



- CTA Brown Line Headquarters – 3232 North Wilton
- Jobsite office near the Diversey and Paulina Stations
- General Contractor Hotline – 773-308-SERV



Brown Line Capacity Expansion Project Station Closures



Station Closure Criteria (established January 2005)

- Brown Line service operates seven days a week
- No adjacent stations closed on weekdays
- No station farther than one-half mile from another station closed on weekdays
- CTA staff meets with the public prior to advertising each bid package to brief communities on proposed stations designs, closures and service alternatives
- Closure details are posted prominently at each station, together with information about safe and convenient service alternatives
- CTA has developed a business outreach plan to assist those businesses most impacted by the construction schedule



Brown Line Capacity Expansion Project Southport, Diversey, Wellington and Paulina Stations



- Station Phases*
 - Southport Station Closure: April 2, 2007
 - Construction duration: 399 days
 - Closure: 365 days
 - Diversey Station Closure: Spring of 2007
 - Construction duration: 487 days
 - Closure: 365 days
 - Paulina Station Closure: Spring of 2008
 - Construction duration: 399 days
 - Closure: 365 days
 - Wellington Station Closure: Spring/Summer 2008
 - Construction duration: 499 days
 - Closure: 365 days
- Hours of work
 - Normal weekday hours 7am-3:30pm
 - Occasional night and weekends

*Locations and dates of work shown on this schedule are subject to change based on differing site conditions, weather 17
work conditions and receipt of permits, plus other items beyond the control of the CTA or the Contractors performing
the work



Brown Line Capacity Expansion Project

Existing Bus Routes



Paulina	
Rail Stations	
Addison and Southport Brown Line Stations	
Bus Routes	
9 Ashland	
X9 Ashland Express	
11 Lincoln / Sedwick	
77 Belmont	
152 Addison	
Southport	
Rail Stations	
Paulina and Belmont Brown Line Stations	
Bus Routes	
9 Ashland	
X9 Ashland Express	
22 Clark	
77 Belmont	
152 Addison	



Brown Line Capacity Expansion Project

Existing Bus Routes



Wellington	
Rail Stations	
Belmont and Diversey Brown Line Stations	
Bus Routes	
	8 Halsted
	22 Clark
	76 Diversey
	77 Belmont
Diversey	
Rail Stations	
Wellington and Fullerton Brown Line Stations	
Bus Routes	
	8 Halsted
	11 Lincoln / Sedgwick
	22 Clark
	36 Broadway
	74 Fullerton
	76 Diversey



Brown Line Capacity Expansion Project Customer Communication



www.ctabrownline.com Brown Line web site

Countdown To A New Brown | The Brown Line Capacity Expansion Project - Microsoft Internet Explorer

File Edit View Favorites Tools Help

Back Forward Stop Reload Home Search Favorites RSS Feeds Print Mail Links

Address <http://ctabrownline.com/> Go Links

countdown to a new BROWN

The Brown Line Capacity Expansion Project

News & Updates

- General Service Updates
- Press Releases
- Progress Chart
- Community Meetings
- Neighborhood Work Alert

Brown Line Businesses

- Support These Businesses
- For Business Owners

Project Details

- About the Brown Line
- Capacity Expansion
- Arts In Transit

Contact CTA

LATEST NEWS & SERVICE UPDATE

Temporary Station Entrance at Fullerton Opened October 8

Reconstruction of the Fullerton station will require CTA customers to use a temporary station entrance beginning Sunday, October 8 as work continues to rebuild the facility as part of the Brown Line capacity expansion project.

Beginning Sunday, October 8 at 1 p.m., CTA customers will access trains at Fullerton via the temporary station entrance, which is located on the south side of Fullerton Avenue approximately 70 feet east of the existing stationhouse. [\(read more\)](#)

Kimball and Francisco Brown Line Stations Closed for Renovation

MY STATION
As of October 23, 2006

- Kimball **CLOSURE**
- Kedzie
- Francisco **CLOSURE**
- Rockwell
- Western
- Damen
- Montrose
- Irving Park
- Addison
- Paulina
- Southport
- Belmont



Brown Line Capacity Expansion Project



2 Week and 3 Month Look Ahead

- Schedule provides a list of upcoming construction activities
 - Detailed 2 week
 - Expanded 3 month
- Updated schedule provided every two weeks
- Access the schedule through www.ctabrownline.com
 - Link for construction schedule is on the main page



Brown Line Capacity Expansion Project Customer Communication



www.transitchicago.com link to Brown Line

Chicago Transit Authority | 1-888-YOURCTA - Microsoft Internet Explorer

Address: <http://www.transitchicago.com/>

Links: Trib, CNN, Times, Ph #'s, elink, Alerts, releases, NBC5, ABC7, CBS2, BrownLine, Ask Carole, govdocs

Chicago Transit Authority

Welcome Aboard:

- [From the Chairman & the President](#)
- [CTA Overview](#)
- [Transit Board Meetings](#)

Business:

- [Careers at CTA](#)
- [Finance/Budget](#)
- [Freedom of Information](#)
- [Office of Inspector General](#)
- [Procurement Information](#)
- [Contact CTA](#)

CTA Store:

- [Chicago Card Plus™](#)
- [Gift Express](#)
- [Transit Cards/Passes](#)

Recently at CTA:

- Check [Customer Alerts](#) for latest service updates.
- New fare structure effective Jan. 1, 2006.
- [Reduced Fares/Student Fares](#).
- [Touch-n-Go Reloading](#).
- Get in the [Go Lane](#).
- CTA 2006 [Historical Calendar](#).
- [CTA Security](#)
- [Construction & Renovation Updates](#).

Travel Information:

- [Bus Schedules](#)
- [Train Schedules](#)
- [Trip Planner](#)
- [System Maps](#)
- [Brochures](#)
- [Accessible Services](#)
- [Fares](#)
- [Park & Ride](#)
- [Riding CTA](#)
- [Related web sites](#)
- [Charter Train, New Residents Program, Transit Benefit Program, U-Pass](#)
- [Visitor Information, Group Sales, Top Transit Trips](#)

Copyright © Chicago Transit Authority
[Terms of Use/Legal](#) :: [Privacy](#) :: [Contact Us](#) :: [Feedback](#)



Brown Line Capacity Expansion Project Customer Communication



Customer Alerts

Provide advance notice of how planned construction or maintenance events are expected to affect CTA service.

Flyers/Handouts

Typically smaller versions of Customer Alert produced for major service changes such as temporary station closures.

Customer Alert

Brown Line Track Maintenance

**Effective 9:00 p.m., Friday, January 13 until 9:00 a.m.,
Saturday, January 14, 2006**

To maintain efficient service, track maintenance is required. Brown Line trains will operate on a single track in both directions between the Belmont and Southport stations.

There may be delays to service. Please allow additional travel time.

www.transitchicago.com
Customer Information: 1-888-YOUR-CTA (1-888-968-7282);
Hearing & Speech Impaired: 1-888-CTA-TTY1 (1-888-282-8891)
Transit Information: 836-7000 from any local area code



Remove January 15, 2006

06JN001 P2



Brown Line Capacity Expansion Project Customer Communication



Alternate Service

Prior to temporary station closure, signs are posted prominently at the station detailing recommended alternate service.



Legend



● Location of CTA Bus Stop



Mayor Richard M. Daley



Rod R. Blagojevich, Governor



Federal Transit Administration



Rockwell

CTA's Brown Line Capacity Expansion Project includes the modernization of this station. Beginning February 20, 2006, Rockwell will be closed for up to six (6) months. During this construction period, please use alternate CTA service.

Alternate Service:

- **Rail Service (within one-half mile)**
Francisco and Western & (Brown Line) stations
- **Bus Service (within one-half mile)**
#11 Lincoln, #49 Western, #49B North Western, #X49 Western Express, #78 Montrose and #81 Lawrence

countdown to a
new **BROWN**

06GA 0618 47

www.ctabrownline.com
1-888-YOUR-CTA





Brown Line Capacity Expansion Project Customer Communication



Construction Activity Notices

Informs residents that work is being performed in their area, which may affect street traffic, alleys and parking.

Construction Activity Notice

To increase capacity on the Brown Line, work will be performed that may affect your community. While progress sometimes comes with inconveniences, we will do our best to keep them to a minimum.

Date: Monday, December 5, 2005 through Monday, February 6, 2006 and Friday, February 24, 2006 through Sunday, February 27, 2006

Location: The north-south alley bounded by West Nelson and West Barry (between Sheffield Avenue and Wilton Street)

Work Hours: 7:00 a.m. to 5:00 p.m. (each day)

Work Activity: Installation of foundations and structural steel on CTA's right-of-way for relay house structures

Impact to Residents:

- The alley between 3035 Sheffield and 3041 Sheffield will be closed for approximately two months.
- The affected alley will be open to residents needing to enter or exit garages.
- "No Parking" restrictions will be in effect during the work activity.

If you have any questions or concerns, please call:
Mark Payne
CTA Government & Community Relations Officer
1-312-681-3091
mpayne@transitchicago.com






Brown Line Capacity Expansion Project Customer Communication



Weekly Service Update

On a weekly basis, CTA issues a press release that details service-related information and what customers need to know regarding temporary station closures, service delays, reroutes, alternate entrances/exits.

**news release**

CHICAGO TRANSIT AUTHORITY
Media Relations Department
P. O. Box 7563
Chicago, Illinois 60680-7563
TEL 312 681-3090

For Immediate ReleaseDecember 9, 2005

Events Affecting CTA Service Beginning the Weekend of December 9 - 11
Wells Street Closed for Water Main Work
Wells Street is closed southbound between 47th and 63rd until the project's completion. Southbound #24 Wentworth, buses are operating via Wells, 47th, Princeton, 55th to Red Line Garfield station, LaSalle, 55th, Princeton, 61st, Stewart, 63rd to Yale, then resuming the regular route.
63rd Street Closed for Repairs through December
63rd Street is closed westbound only between Halsted and Morgan through December 31 for a street widening project. Westbound #63 63rd, buses are operating via 63rd, Halsted Parkway to Morgan, then resuming the regular route. Eastbound service is not affected.
#19 Express Buses Serve Aerosmith, Lenny Kravitz Concert Saturday
The Chicago Transit Authority will operate its #19 United Center Express, buses to the United Center for the Aerosmith/Lenny Kravitz concert Saturday, December 10.
The concert begins at 7:30 p.m. #19 buses will begin their trips south on Michigan from Chicago Avenue at 5:35 p.m. Buses will operate every 12 minutes until the last bus leaves Michigan/Chicago at 7:50 p.m.
(See separate release)
Holiday Train Brightens Green Line Commute Over Weekend
The festive CTA Holiday Train will operate on the Green Line through Saturday, December 10. It will operate between approximately 3 p.m. and 7 p.m. on Friday, December 9 and 1 p.m. and 9 p.m. on Saturday. For more specific information on dates and times, call 836-7000 (any local area code) or visit the web site at www.transitchicago.com.
Brown Line Capacity Expansion:
CTA is working to expand capacity on the Brown Line. When the work is completed, customers will benefit from longer trains during rush hour, and accessible, modern stations and platforms.
- more -




Brown Line Capacity Expansion Project Customer Communication



Press Release

Information on construction plans and significant dates and details for customers provided to media and posted on web sites.

**news release**

CHICAGO TRANSIT AUTHORITY
Media Relations Department
P. O. Box 7563
Chicago, Illinois 60680-7563
TEL 312 681-3090

For Immediate Release

January 6, 2006

First Temporary Station Closure Dates Announced for Seven Brown Line Stations

As announced on December 20, the Chicago Transit Authority has confirmed the dates for temporary station closures and provided a three-month construction schedule for the capacity expansion project currently underway on the Brown Line. The schedule includes dates for temporary station closures for Chicago, Armitage and Sedgwick stations, as well as Kimball, Kedzie, Francisco and Rockwell. The location and dates are subject to change based on weather conditions or other circumstances beyond the control of CTA.

Kimball, Kedzie, Francisco and Rockwell stations will be subject to temporary station closures during the weekday throughout portions of the construction project. These stations are within a half-mile or less of each other and no two adjacent stations will be closed at the same time during weekdays so customers may go to the next closest station for service, or use nearby bus routes.

The Kedzie and Rockwell stations will temporarily close starting February 20 for up to six months. Alternate rail service includes Kimball station, adjacent to Kedzie, and Francisco, located between Kedzie and Rockwell stations, which will remain open to serve Brown Line customers throughout the temporary closure of Kedzie and Rockwell. Customers in close proximity to the Kedzie station are also served by the following CTA bus routes: #78 Montrose, #81 Lawrence, #82 Kimball/Homan and #93 California/Dodge. Customers in close proximity to the Rockwell station are served by the following CTA bus routes: #11 Lincoln, #49 Western, #49B North Western, #X49 Western Express, #78 Montrose and the #81 Lawrence.

Signs informing customers of estimated dates for temporary station closures, existing alternate service and construction details will be posted at each of these stations and on CTA's web site. CTA estimates construction on Kedzie and Rockwell stations will take from 10 to 11 months.

In addition to the temporary weekday closures, Kimball, Kedzie, Francisco and Rockwell will close for up to up to 10 weekends during construction to allow construction crews unlimited access to station platforms.

- more -



Brown Line Capacity Expansion Project Customer Communication



- Service Disruptions
Information on service disruptions is provided to all print and television media outlets, posted on CTA's web site and provided to Customer Assistants at stations on the line.
- Report It
We encourage our customers to report a problem with the announcement system or if a Customer Assistant is not communicating the appropriate information to customers. Please contact 1-888-YOUR-CTA



Brown Line Capacity Expansion Project Business Outreach Plan



Within One Block - Advertising Car Cards

Support Rockwell Businesses.



Rockwell Grill
4632 N. Rockwell



Lake Claremont Press
4650 N. Rockwell



www.ruffhauspets.com
Ruff Haus Pets
4652 N. Rockwell

Scents and Sensibility
a chic boutique

Scents and Sensibility
4654 N. Rockwell

Although the Rockwell station is temporarily closed, businesses near the station are still open!
CTA encourages you to support businesses near the Brown Line during construction.
Visit www.ctabrownline.com or www.transitchicago.com.

countdown to a
new **BROWN**





Brown Line Capacity Expansion Project Business Outreach Plan



Within Two Blocks

Marketing - Open for Business Kit

- Open for Business Postcard Template – A postcard template will be provided on CD-ROM for businesses to notify customers that they are still open for business during construction.
- Progress Posters – Depict the ongoing progress of the project. Sent to businesses for display and updated regularly.
- Informational Letter – A letter to business owners detailing the project and information specific to nearby station construction.



Brown Line Capacity Expansion Project Business Outreach Plan



Within Two Blocks

Marketing - Open for Business Kit

- Open for Business Poster - A poster reminding customers and passersby that their establishment is “Open for Business” during construction.
- Brown Line Fact Sheet – A one-sheet overview of the construction, proposed dates of closures, facts and statistics.



Brown Line Capacity Expansion Project Contact Information



General Questions

Mark Payne
Chicago Transit Authority
mpayne@transitchicago.com
(312) 681-2713

CTA Web Site

www.transitchicago.com
www.ctabrownline.com

Brown Line Comments

brownlinebusiness@yahoo.com

Service Questions

CTA Service
ctahelp@transitchicago.com
1-888-your-CTA

Chicagoland Entrepreneurial Cntr

Jason Jacobson
330 N. Wabash Ave., Suite 2800
Chicago, IL 60611
Telephone: (312) 494-6777
Email: info@chicagolandec.org
www.chicagolandec.org

General Contractor Hotline

773-308-SERV



Brown Line Capacity Expansion Project



CTA Community Meetings

The Chicago Transit Authority will hold community meetings to provide proposed service details for upcoming three-track operations. As part of the larger Brown Line Capacity Expansion Project, platforms will be expanded and elevators will be installed at the Belmont and Fullerton stations. Tracks must be moved for construction so the four tracks on which the Brown Line, Purple Line Express and Red Line currently operate will be reduced to three tracks.

Monday, March 12, 2007

6 p.m. to 8 p.m.

Lane Tech High School Auditorium*

2501 West Addison Street (Addison and Western)

Monday, March 19, 2007

6 p.m. to 8 p.m.

Truman College Cafeteria*

1145 West Wilson Avenue

Thursday, March 15, 2007

6 p.m. to 8 p.m.

Agassiz Elementary School Auditorium*

2851 North Seminary Avenue

Monday, March 26, 2007

6 p.m. to 8 p.m.

CTA Headquarters - 2nd Floor*

567 West Lake Street

*All facilities are accessible to people with disabilities.

www.transitchicago.com

Customer Information: 1-888-YOUR-CTA (1-888-968-7282); Hearing & Speech Impaired: 1-888-CTA-TTY1 (1-888-282-8891)

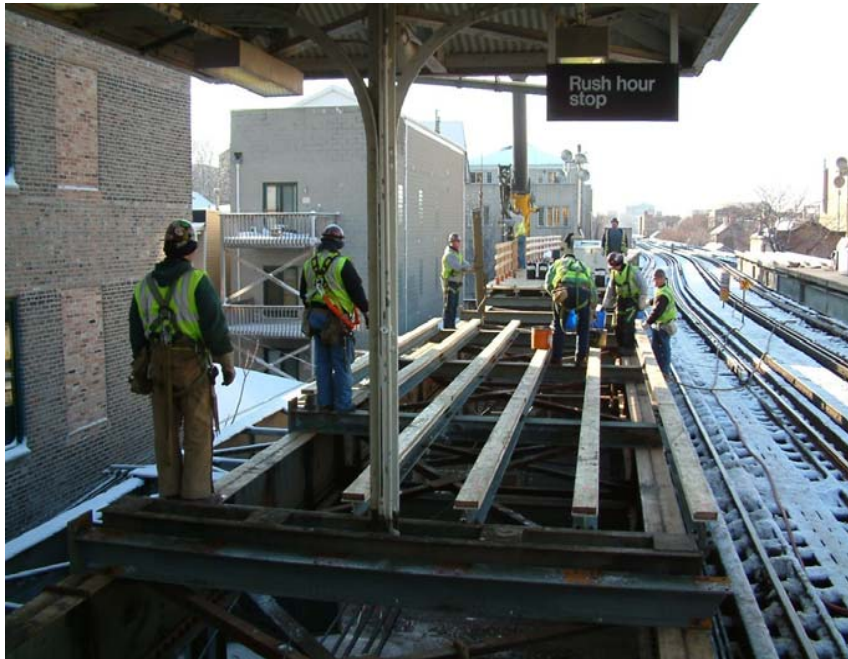
Transit Information: 836-7000 from any local area code; TTY: 312-836-4949

Remove March 27, 2007





Brown Line Capacity Expansion Project



Southport, Diversey, Wellington and Paulina Stations
Meet the Contractor
March 1, 2007
Advocate Illinois Masonic Medical Center
Olson Auditorium



Brown Line Capacity Expansion Project



Southport Station



Brown Line Capacity Expansion Project



Diversey Station



Brown Line Capacity Expansion Project



Wellington Station



Brown Line Capacity Expansion Project



Paulina Station